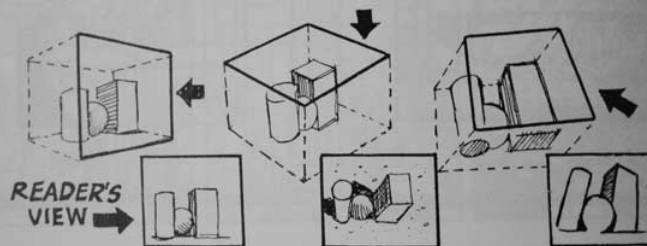


Becoming



The power of Composition

Becoming Screen wise



- As soon as cameras became lighter and more portable directors realized they could manipulate the content of an image by changing the perspective. Thus making the shot more interesting and integral to the story.

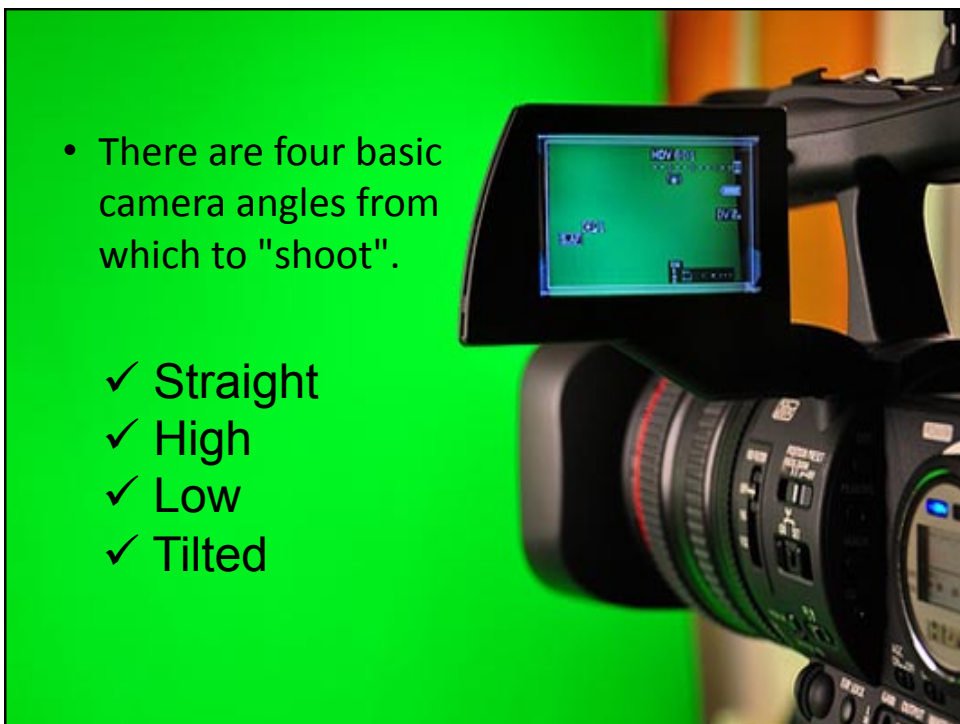
The camera's angle not only gives a viewpoint from a physical location. It also gives emotional information to the viewer and guides the viewer's judgment about the character or object in the shot.



- The Camera Angle Helps To Determine The Emotional Response of the Audience.
- Camera angles are used to set a mood or a tone, so viewers can better understand the emotional environment presented to them.
- The angle that a subject is shot will evoke an emotional response from the viewer.

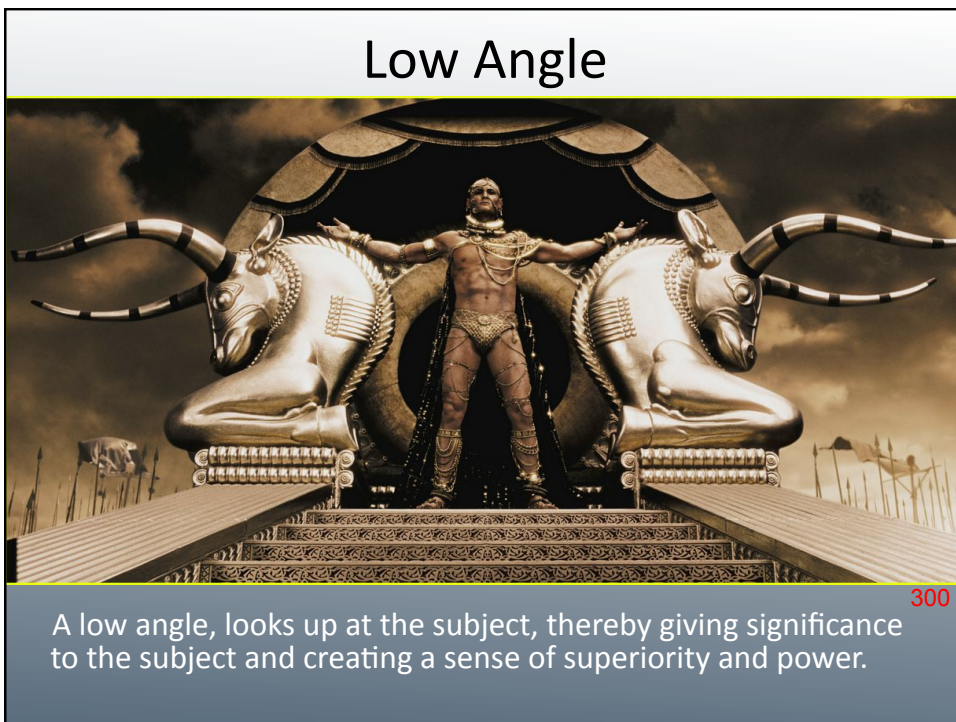
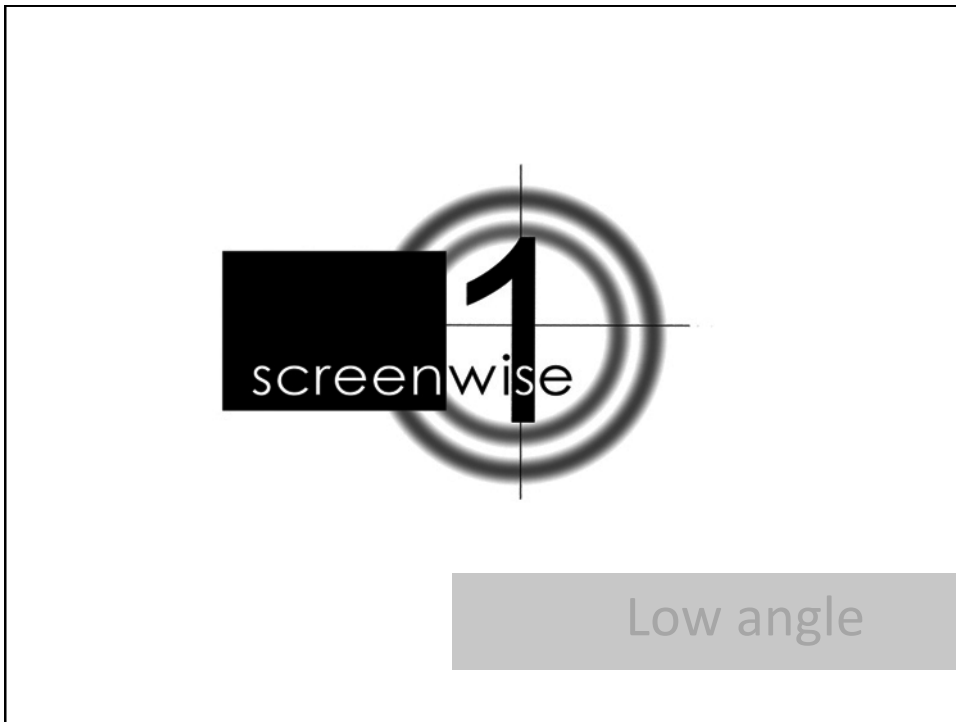


For example, by taking a picture of a basketball player from the floor, the photographer accentuates the height of the player. The effect makes the audience feel a certain way. This is what is meant by 'the camera can create meaning'.

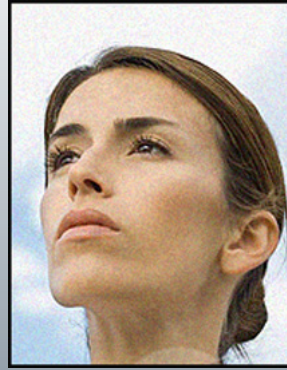


- There are four basic camera angles from which to "shoot".

- ✓ Straight
- ✓ High
- ✓ Low
- ✓ Tilted



Low Angle



It can also give the impression of looking bigger, stronger, or even noble.

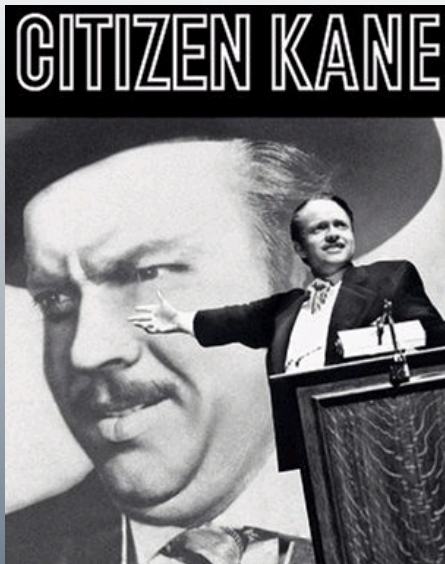
Low Angle



- The camera positions of newscasts and talk shows are often set just below the eye level of the host for a reason. So that audiences feel that they are literally looking up at them, and this communicates a sense of "authority" and "credibility".



These angles are frequently used in political and propaganda ads. Explain why you think low angles are used in these types of ads?

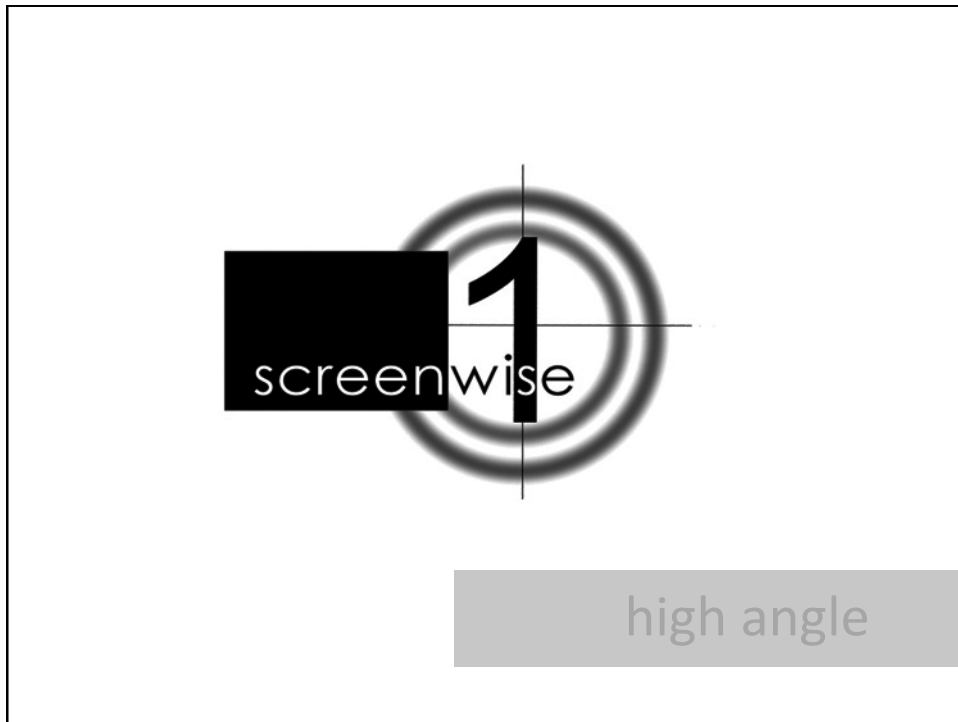


Citizen Kane,
Directed by Orson Welles
Released 1941

Perhaps the most prominent element of film is the various camera angles that Welles used. In many shots he actually dug into the set to get the camera as low as possible.

• [Citizen Kane - Low-Angle Discussion](http://www.youtube.com/watch?v=qTibCCASW_A)

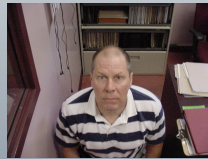
http://www.youtube.com/watch?v=qTibCCASW_A



high angle

- A high angle, places the camera above the subject, and is typically used to look down on the subject or do look down with the subject.

A high angle is used to minimize the importance of the subject, creating a sense of isolation, inferiority, and weakness.



High angle

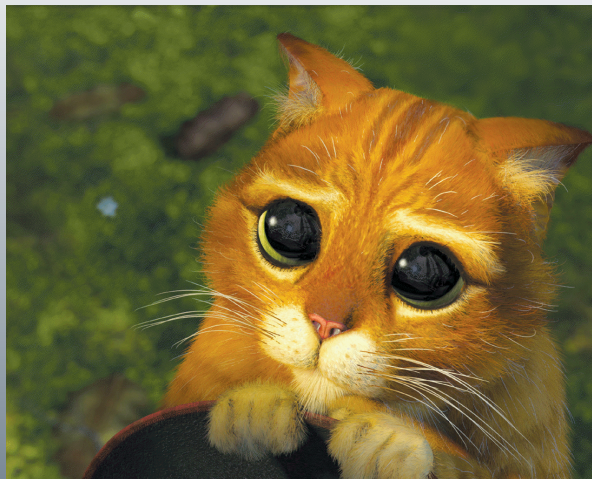
- A high angle shot can also make a character look smaller, weaker or confused. This can have the emotional effect of diminishing the subject, making them appear less powerful, less significant or even submissive.





- This high angle shot, suggests the character is in trouble or about to be killed and become a victim.

High angles can also be used to make the subject look physically smaller



What is the director trying to exaggerate in this shot by using a high angle?

A high angle may also be used to show a character as a victim.



How has the director used this shot to show 'The Joker' as weak and powerless?



In your own words describe what affect the camera angle creates in this shot.



Camera Tilt

- Sometimes the camera is tilted (ie is not placed horizontal to floor level), to suggest imbalance and instability (most popular in horror movies). Tilting the camera can also make a shot look more dramatic.



By slightly tilting the following shots, they not only became more interesting but also more dramatic.



By slightly tilting the following shots, they not only became more interesting but also more dramatic.



By slightly tilting the following shots, they not only became more interesting but also more dramatic.

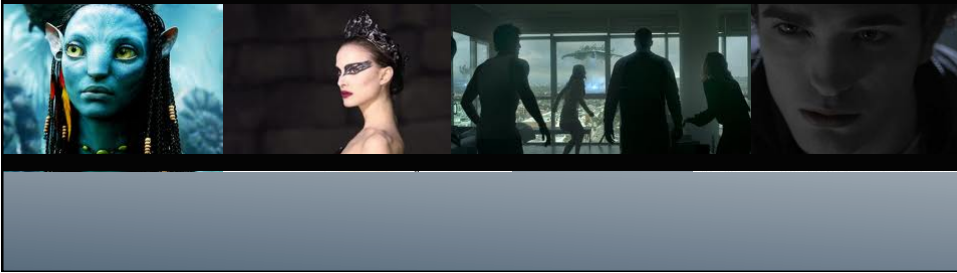


Straight Angle

The Straight Angle



- The straight angle, places the camera on the same level of the subject, thus creating a sense of equality between the subject and the viewer.



The Straight Angle



- This angle is also the most common and shows the subject as an equal.

